

# Injector-Kleen™ 3000

## Gasoline Fuel System Cleaner

### Restore Your Engine's Power and Performance in a Single Treatment

Are you experiencing engine performance or combustion issues with your gasoline engine? Having trouble passing emissions inspections? Or do you just want the cleanest, smoothest running engine you can have? Injector-Kleen 3000 can help you with all three in a single treatment! Injector-Kleen 3000 is a powerful gasoline fuel system cleaner that removes power-robbing combustion deposits, gums and varnishes from your injectors, intake valves and combustion chambers. Injector-Kleen 3000 restores lost power, improves emissions and increases fuel economy. Use Injector-Kleen 3000 to treat combustion related problems such as rough starting or idling, poor acceleration and throttle response, engine surging and misfires, engine knock or ping, and low speed pre-ignition.

#### BENEFITS

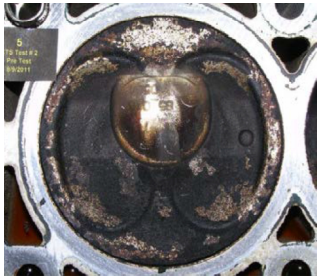
- Restores engine power and performance
- Cleans fuel injectors, carburetors, intake valves, and ports of power-robbing deposits
- Improves fuel economy
- Prevents rust and corrosion in tanks and fuel lines
- Helps remove water to fight ethanol phase separation and gas line freezing
- Safe for use in all gasoline engines
- To maintain LIKE-NEW engine performance, the recommended treatment is just once every 3000 miles or as needed
- Not recommended for fuels containing greater than 50% ethanol



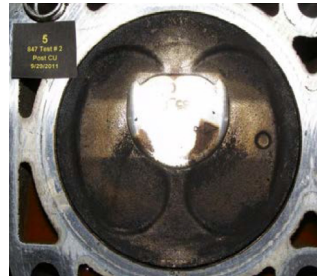
**Before**  
Injector-Kleen 3000 Treatment



**After just one**  
Injector-Kleen 3000 Treatment



**Before Injector-Kleen  
3000 Treatment**



**After just one  
Injector-Kleen 3000  
Treatment**

## INJECTOR-KLEEN 3000 PERFORMANCE RESULTS AFTER SINGLE TREATMENT

|                                      |       |
|--------------------------------------|-------|
| Injector Valve Deposit Reduction     | 72.4% |
| Combustion Chamber Deposit Reduction | 45.7% |
| Fuel Economy Increase                | 2.3%  |
| HC Emissions Reduction               | 32%   |
| CO Emissions Reduction               | 24%   |
| NOx Emissions Reduction              | 9.3%  |

### About Hydrotex®

Hydrotex® is a manufacturer and distributor of high performance lubricant and fuel improver solutions. As an employee owned company, we help our customers develop sustainable solutions designed to help improve system reliability, save energy, limit pollution, extend fixed asset life, reduce maintenance costs and improve fuel efficiency. Our products and services leverage over 80 years of innovation resulting in superior lubrication solutions.

## YOUR LUBRICATION CONSULTANT

## For optimal results, use with:

### ESSENTIALUBE®

Essentialube Engine Treatment & Flush has maximized equipment performance since 1946 by removing and protecting against corrosion, sludge, and deposits. Add Essentialube to engine, transmission, gear, and hydraulic oils to clean and flush systems.



### HYFILM® LEO EPG

HyFilm LEO EPG uses state-of-the-art technology to protect modern gasoline engines while maximizing fuel economy and extending service intervals. Designed to meet the rigorous demands of modern high output turbocharged and supercharged gasoline engines, HyFilm LEO EPG is also backward compatible to provide lubrication across the entire range of gasoline engines. Available in SAE 5W-20 and 5W-30.



### HYPLEX™

Ensure maximum protection of your wheel bearings, chassis points and fifth wheels with HyPlex automotive grease. This multi-functional high performance grease is formulated to excel under conditions of high heat, high speed, vibration, moisture and heavy loads. Grade 2 is NLGI GC-LB certified.



## The Hydrotex Warranty

When properly stored and used in accordance with instructions, any material not satisfactory will be replaced with any product in our line on a dollar for dollar basis provided the account is paid in full when due, and Hydrotex is notified, in writing, within 12 months of the date of the order by the customer.

**Ask your Hydrotex representative about how Lubrication Management can add value to your business.**



- Improve Reliability
- Increase Uptime
- Optimize Efficiency